

CONNECTOR SOLUTIONS





Content

TT SERIES

Waterproof Connector Series

TT30 DATA SERIES

Waterproof Connector Series

Fiber LC DX Plug/Unplug Connector	13
RJ45 Plug/Unplug Connector	14
USB Plug/Unplug Connector	15
HDMI Plug/Unplug Connector	16

TT20 SERIES

Waterproof Connector Series

2-3-4-5-7-9-12 Pin Connector	17
------------------------------	----

TT25 SERIES

Waterproof Connector Series

2-3-4-5-7-9-12 Pin Connector	18
------------------------------	----

TT30 SERIES

Waterproof Connector Series

3-4-10-12-19-24 Pin Connector	19
-------------------------------	----

TT35 SERIES

Waterproof Connector Series

3-4-10-12-19-24 Pin Connector	20
-------------------------------	----

WPT-WPI-WPM-WPF-WPP SERIES

Waterproof Connector Series

WPT SERIES	22
3 Pin T Field Assembly Screw Connection Connector	
WPI SERIES	23
3 Pin I Field Assembly Screw Connection Connector	
WPM-WPI-WPP SERIES	24
2 Pin Pluggable Screw Connection Connector	
WPM-WPI-WPP SERIES	25
3 Pin Pluggable Screw Connection Connector	
WPM-WPI-WPP SERIES	26
4 Pin Pluggable Screw Connection Connector	
WPI SERIES	27
3 Pin I Field Assembly Screw Connection Connector	
WPI SERIES	28
3 Pin I Field Assembly Screw Connection Connector	
WPP SERIES	29
3 Pin Panel Type Field Assembly Screw Connection Connector	
WPT SERIES	30
3 Pin T Field Assembly Screw Connection Connector	
WPI SERIES	31
6 Power Pin I Field Assembly Screw Connection Connector	
WPT SERIES	32
6 Power Pin T Field Assembly Screw Connection Connector	



Content

WPS-WPA SERIES

Waterproof Pluggable Electrical Splitter

2 Pin Male Pluggable Electrical Splitter 1 In x 3 Out	34
2 Pin Female Pluggable Electrical Splitter 1 In x 3 Out	35
3 Pin Male Pluggable Electrical Splitter 1 In x 3 Out	36
3 Pin Female Pluggable Electrical Splitter 1 In x 3 Out	37
4 Pin Male Pluggable Electrical Splitter 1 In x 3 Out	38
4 Pin Female Pluggable Electrical Splitter 1 In x 3 Out	39
3 Pin Screw Connection Electrical Splitter 1 In x 3 Out	40
3 Pin Screw Connection Electrical Splitter 1 In x 5 Out	41

WP BOX SERIES

Waterproof Pluggable Electrical Splitter

IP Box WP-BOX-04	43
IP Box WP-BOX-05	44

KLM SERIES

Terminal Block Series

KLM-29-G 1 Pin Rail Type Without Screw Terminal Block	46
KLM-29-SY 1 Pin Rail Type Without Screw Terminal Block	47
KLM-30 2 Pin Without Screw Terminal Block	48
KLM-31 3 Pin Without Screw Terminal Block	49



Who Are We ?

TTAF, founded in Istanbul in 2003, is a specialized organization that has gained trust and admiration both in Turkey and worldwide with its custom product designs and solutions for different needs in advanced technology connection elements, cable assemblies, plastic injection, fiber solutions, and professional lighting applications.

With over a quarter-century of experience and accumulation, the aim of TTAF is to provide its customers with the highest quality products with its state-of-the-art machinery and superior service approach, providing complete system solutions that extend to telecommunications, defense industry, aerospace, automotive, and lighting solutions, and exporting to 70 countries.

TTAF continues production activities in Istanbul and Bursa facilities based on the principle of "customer satisfaction first."



We Design, Develop & Manufacture.





Our History Timeline

1990	Former company Elektromar started connector sales.
2003	TTAF factory was established.
2006	TTAF China Shenzhen office was established.
2012	TTAF started fiber optic production.
2015	TTAF started lighting production.
2021	Rise-X start-up investment was made. FOBOS plastic factory established. GTOT 3D metal printer design started. DOGON Design started designing electrical car.
2022	Futurexpress was founded.
2023	Pangea was founded.



Group Companies



Locations



TTAF ELEKTRONİK

Kavaklı, İstanbul Cd. No:21, 34520
Beylikdüzü Osb/Beylikdüzü/İstanbul
www.ttaf.com.tr

GTOT

Kavaklı, İstanbul Cd. No:21, 34520
Beylikdüzü Osb/Beylikdüzü/İstanbul
www.gtot.ttaf.com.tr

FOBOS PLASTİK

Osmangazi Mah. 2684.Sok. No:7 İç
Kapı No:Z1 34522/Esenyurt/İstanbul
www.fobos.com.tr

RISE-X TECHNOLOGY

Sanayi, Teknopark Blv No: 1 D:9A,
34906 Pendik/İstanbul
www.risex.ttaf.com.tr

FUTUREXPRESS

Sanayi, Teknopark Blv No: 1 D:9A,
34906 Pendik/İstanbul
www.futurexpress.com.tr

DOGON DIZAYN

Düldane mah. İstanbul cd. No:850
Osmangazi/Bursa
www.dogon.com.tr

TTAF SHENZHEN OFFICE

9th Floor, 3rd Building, Jianghao
Industrial District, Shenzhen/
Guangdong/China 518129
www.ttaf.com.tr

PANGEA

9854 National Blvd300,90034
California/Los Angeles/USA
www.pangeatech.com.cc



Projects & Design

Connectors designed for various industrial applications allow electrical connections to be made quickly and safely. These solutions are used in many fields, from high-performance machines to industrial automation systems.

In this regard, our company has a wide range of connectors. Our industrial connectors can be customized according to the needs of businesses and designed to meet different application requirements.

R&D

Our connectors can be produced in different sizes, pin numbers, and terminals according to customer demands. Additionally, we adopt a sustainable approach by using environmentally friendly materials. By doing so, we offer our customers high-quality, reliable, and eco-friendly connector solutions.



Test

We work with extraordinary meticulousness to produce products that provide high-quality, high-performance, and secure user experience. Before the production process, we subject all of our products to electrical and harsh climate conditions at TTAF laboratories, and we do not risk the test steps that will take place in accredited test laboratories. This way, we provide a time advantage in the certification processes of the products.

Manufacturing

TTAF production line, which offers the privilege of customization according to the needs of our customers, adds value to the production process with our production and quality control teams.





Product Code

TT	30	M	03	PE	0	1	001
1	2	3	4	5	6	7	8

1	Product Name	Name Of Product
2	Mounting Size	20 - 25 - 30 - 35
3	Type Of Terminal	M: male, F: female, U: USB, R: RJ45, F: fiber optic
4	Quantity Of Terminal	2 - 3 - 4 - 7 - 9 etc.
5	Category	PE: panel type , SX: cable type
6	Connection Of Wire	0: solder
7	Generation	1
8	Special Code	Material Color



TT SERIES



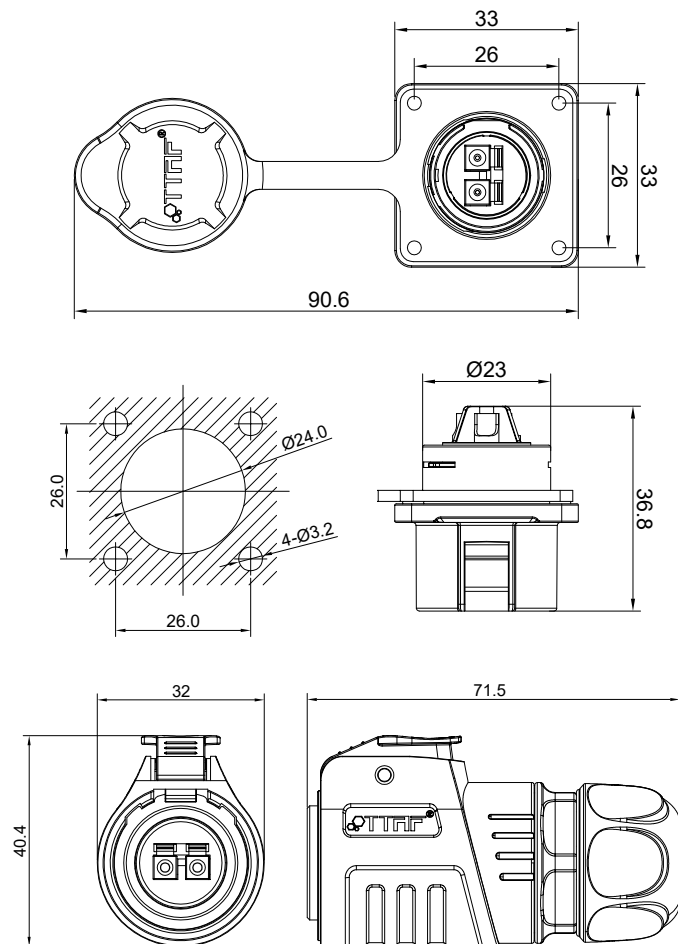
EN 60309-1
 EN 60695-2
 EN 61984-2009





TT30 DATA SERIES

Waterproof Fiber LC DX Pluggable Connector
Product Code - TT 30 SERIES FIBER

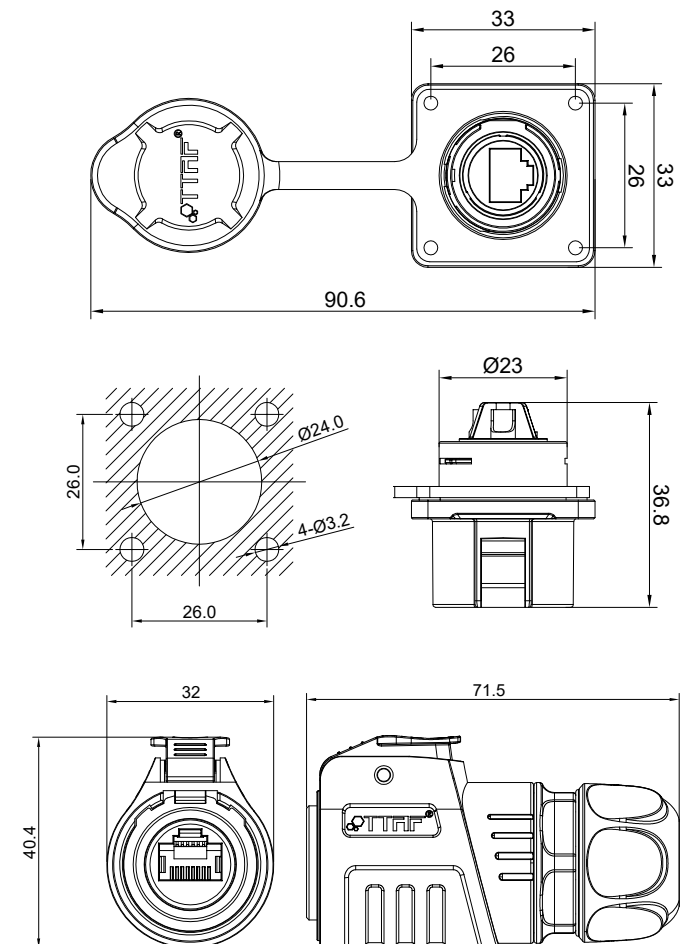


Type	Fiber
Connection Type	Plug/Unplug
Durability	500
Receptacle Housing	PBT, Black
Cable Outer Diameter	2 mm - 8.4 mm
Operating temperature	-40°C - 80°C
IP Class	IP65/IP67



TT30 DATA SERIES

Waterproof RJ45 Pluggable Connector
Product Code - TT 30 SERIES RJ45



Type	RJ45
Connection Type	Plug/Unplug
Durability	500
Current Rating	1.5A.
Withstanding Voltage	1000V.
Contact Resistance	< 30 MΩ
Receptacle Housing	PBT, Black
Cable Specification	Cat5e - Cat6a - Cat7
Cable Outer Diameter	5.5 mm - 6.60 mm
Operating Temperature	-40°C - 80°C
IP Class	IP65/IP67

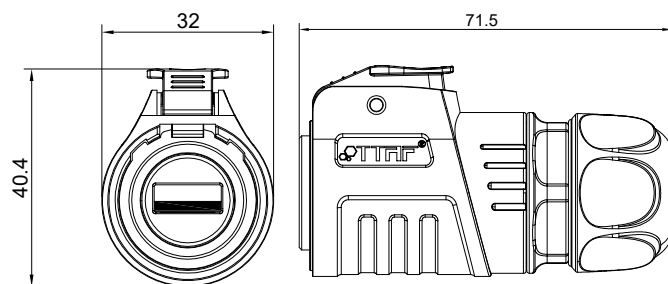
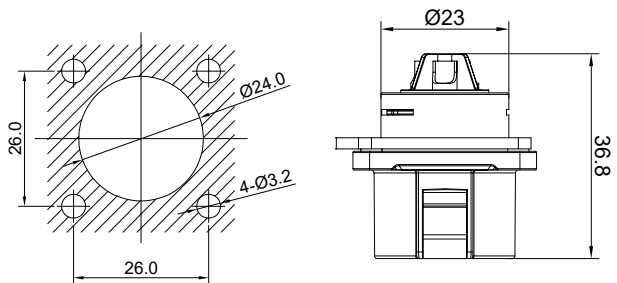
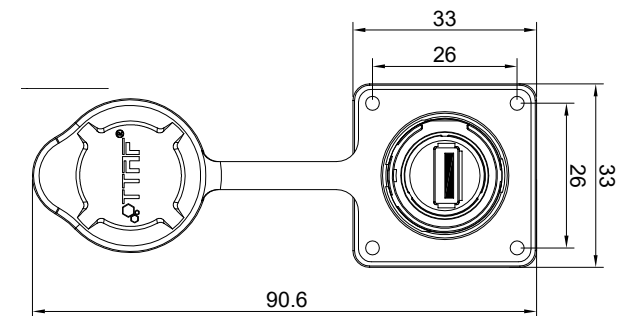


TT30 DATA SERIES

Waterproof USB Pluggable Connector

Product Code - TT 30 SERİSi USB

EN 60309-1
EN 60695-2
EN 61984-2009



Type	USB
Connection Type	Plug/Unplug
Durability	500
Receptable Housing	PBT, Black
Cable Specification	0.08*-0.2 mm ² / 28-24 AWG
Cable Outer Diameter	5.5 mm
Operating Temperature	-40°C- 80°C
IP Class	IP65/IP67

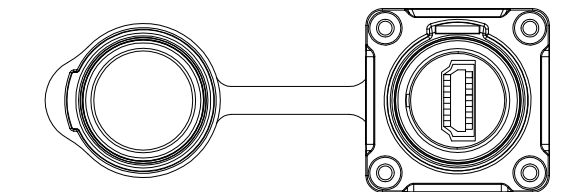
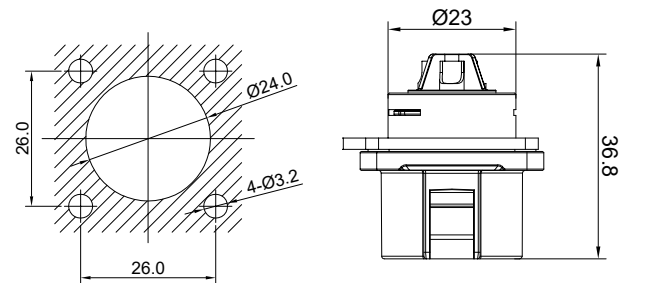
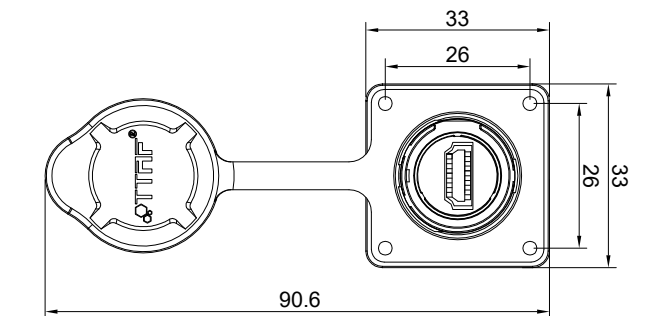


TT30 DATA SERIES

Waterproof HDMI Pluggable Connector

Product Code - TT 30 SERİSi HDMI

EN 60309-1
EN 60695-2
EN 61984-2009



Type	HDMI
Connection Type	Plug/Unplug
Durability	500
Receptable Housing	PBT, Black
Cable Specification	0.15*-0.2 mm ² / 26-24 AWG
Cable Outer Diameter	5.5 mm - 7 mm
Operating Temperature	-40°C- 80°C
IP Class	IP67



TT20 SERIES

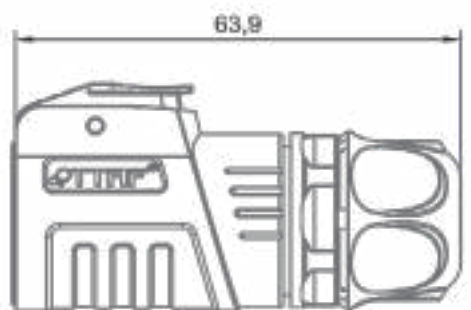
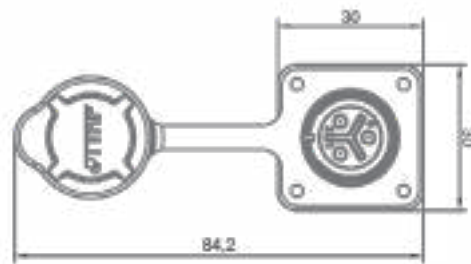
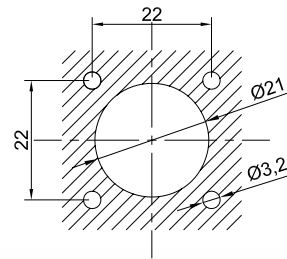
2-3-4-5-7-9-12 Pin Waterproof Connector

Product Code - TT20 Series

EN 60309-1
EN 60695-2
EN 61984-2009



Pin Numbers	2-3-4	5-7	9-12
Operating Voltage	500V.	500V.	400V.
Current Rating	20A.	12A.	5A.
Withstanding Voltage	2500V.	2500V.	1500V.
Contact Resistance	< 1 MΩ	< 2.5 MΩ	< 5 MΩ
Temperature Rise	20A 30°C	12A 30°C	5A 30°C
Temperature Rise	25A 40°C	15A 40°C	7A 40°C
Temperature Rise	30A 50°C	20A 50°C	10A 50°C
Mating Cycle	1700	1700	1700
Seal Material	Silicone	Silicone	Silicone
Contact Dimension	2.7*2-2.7*3-2.7*4	1.8*5-1.8*7	1.0*9-1.0*12
IP Class	IP65/IP67	IP65/IP67	IP65/IP67



TT25 SERIES

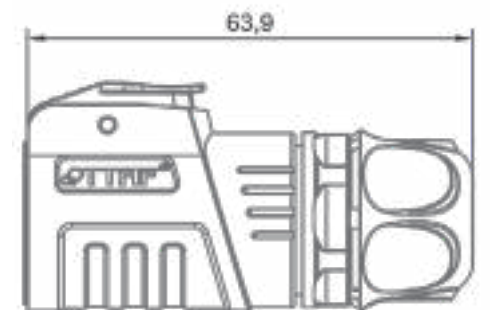
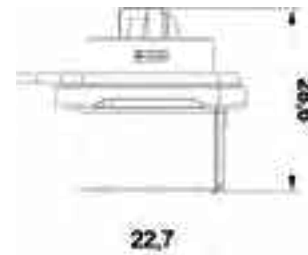
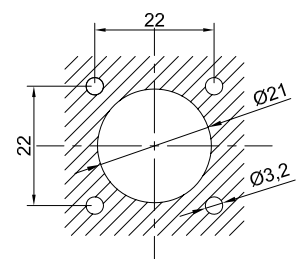
2-3-4-5-7-9-12 Pin Waterproof Connector

Product Code - TT25 Series

EN 60309-1
EN 60695-2
EN 61984-2009



Pin Numbers	2-3-4	5-7	9-12
Operating Voltage	500V.	500V.	400V.
Current Rating	20A.	12A.	5A.
Withstanding Voltage	2500V.	2500V.	1500V.
Contact Resistance	< 1 MΩ	< 2.5 MΩ	< 5 MΩ
Temperature Rise	20A 30°C	12A 30°C	5A 30°C
Temperature Rise	25A 40°C	15A 40°C	7A 40°C
Temperature Rise	30A 50°C	20A 50°C	10A 50°C
Mating Cycle	1700	1700	1700
Seal Material	Silicone	Silicone	Silicone
Contact Dimension	2.7*2-2.7*3-2.7*4	1.8*5-1.8*7	1.0*9-1.0*12
IP Class	IP65/IP67	IP65/IP67	IP65/IP67



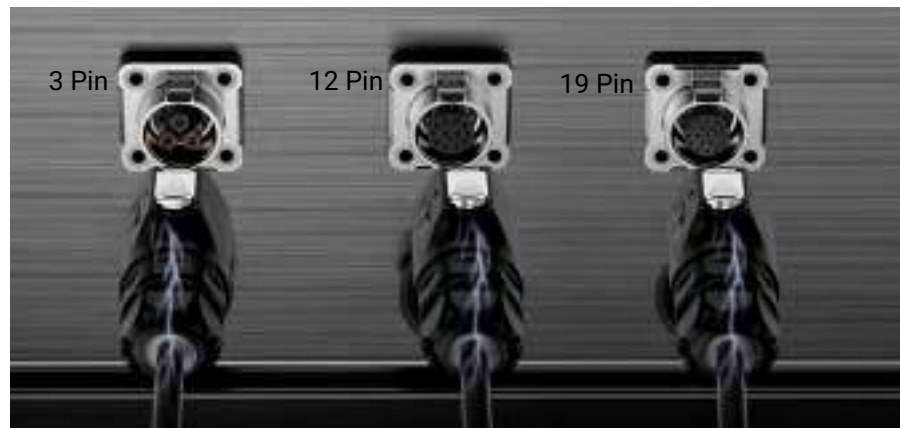


TT30 SERIES

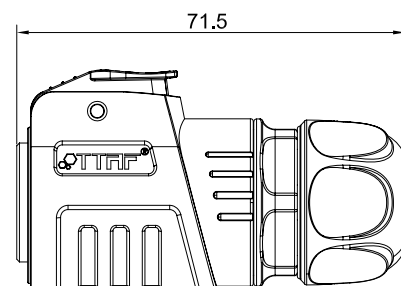
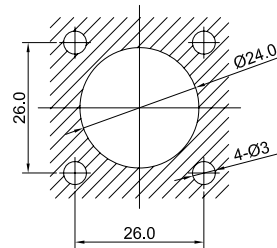
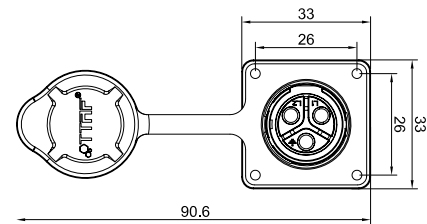
3-4-10-12-19-24 Pin Waterproof Connector

Product Code - TT30 Series

EN 60309-1
EN 60695-2
EN 61984-2009



Pin Numbers	3-4	10-12	19-24
Operating Voltage	500V.	250V.	125V.
Current Rating	22A.	10A.	3A.
Withstanding Voltage	2500V.	2500V.	1500V.
Contact Resistance	<1 MΩ	<3 MΩ	<5 MΩ
Temperature Rise	20A 30°C	10A 30°C	3A 30°C
Temperature Rise	25A 40°C	15A 40°C	7A 40°C
Temperature Rise	30A 50°C	20A 50°C	10A 50°C
Mating Cycle	1700	1700	1700
Seal Material	Silicone	Silicone	Silicone
Contact Dimension	3.0*3-3.0*4	1.5*10-1.5*12	1.0*1.9-1.0*2.4
IP Class	IP65/IP67	IP65/IP67	IP65/IP67

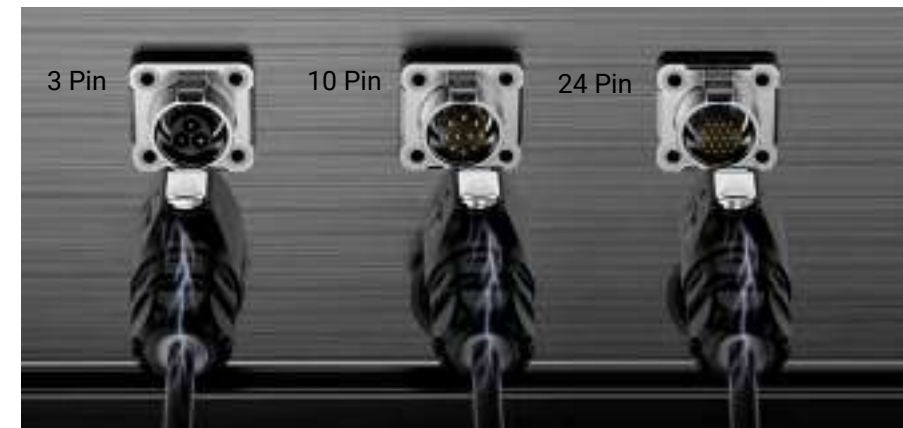


TT35 SERIES

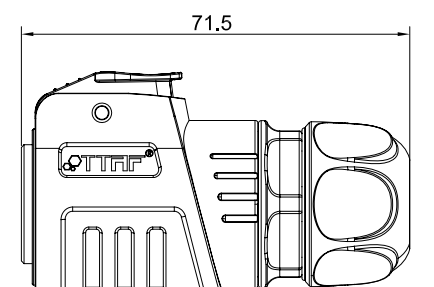
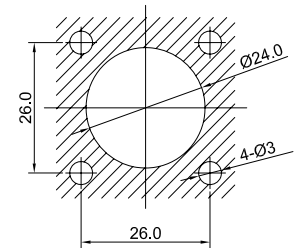
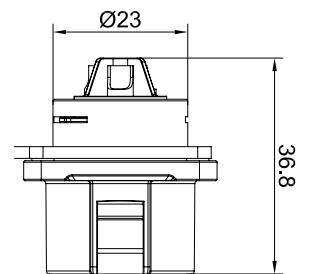
3-4-10-12-19-24 Pin Waterproof Connector

Product Code - TT35 Series

EN 60309-1
EN 60695-2
EN 61984-2009



Pin Numbers	3-4	10-12	19-24
Operating Voltage	500V.	250V.	125V.
Current Rating	22A.	10A.	3A.
Withstanding Voltage	2500V.	2500V.	1500V.
Contact Resistance	< 1 MΩ	< 3 MΩ	< 5 MΩ
Temperature Rise	20A 30°C	10A 30°C	3A 30°C
Temperature Rise	25A 40°C	15A 40°C	7A 40°C
Temperature Rise	30A 50°C	20A 50°C	10A 50°C
Mating Cycle	1700	1700	1700
Seal Material	Silicone	Silicone	Silicone
Contact Dimension	3.0*3-3.0*4	1.5*10-1.5*12	1.0*1.9-1.0*2.4
IP Class	IP65/IP67	IP65/IP67	IP65/IP67





Waterproof Connector Series



WPT-WPI-WPM-WPF-WPP Series



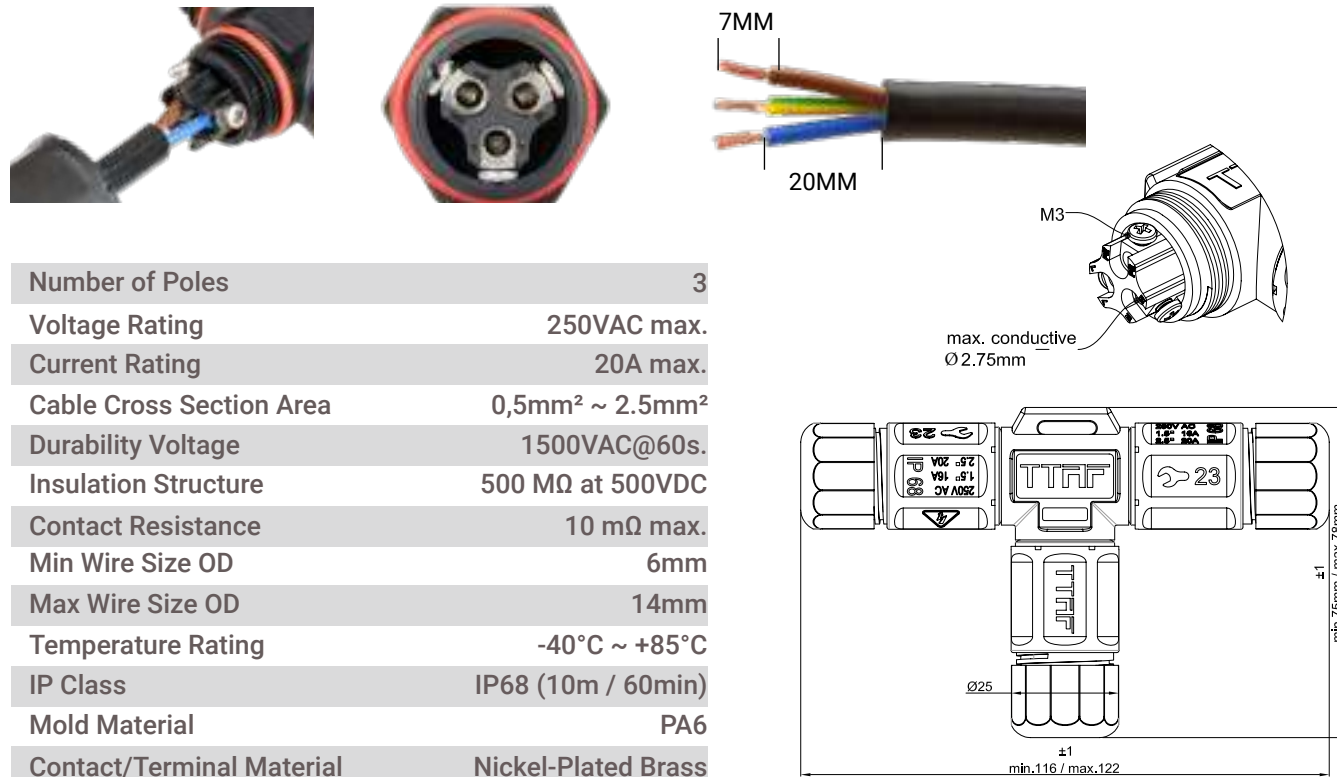


WPT Series

3 Pin T Field Assembly Screw Connection Connector

Product Code - WPT-0303M20/14
Waterproof Connector Series

EN 60309-1
EN 60695-2
EN 61984-2009



Number of Poles	3
Voltage Rating	250VAC max.
Current Rating	20A max.
Cable Cross Section Area	0,5mm ² ~ 2.5mm ²
Durability Voltage	1500VAC@60s.
Insulation Structure	500 MΩ at 500VDC
Contact Resistance	10 mΩ max.
Min Wire Size OD	6mm
Max Wire Size OD	14mm
Temperature Rating	-40°C ~ +85°C
IP Class	IP68 (10m / 60min)
Mold Material	PA6
Contact/Terminal Material	Nickel-Plated Brass
Seal Material	Silicon

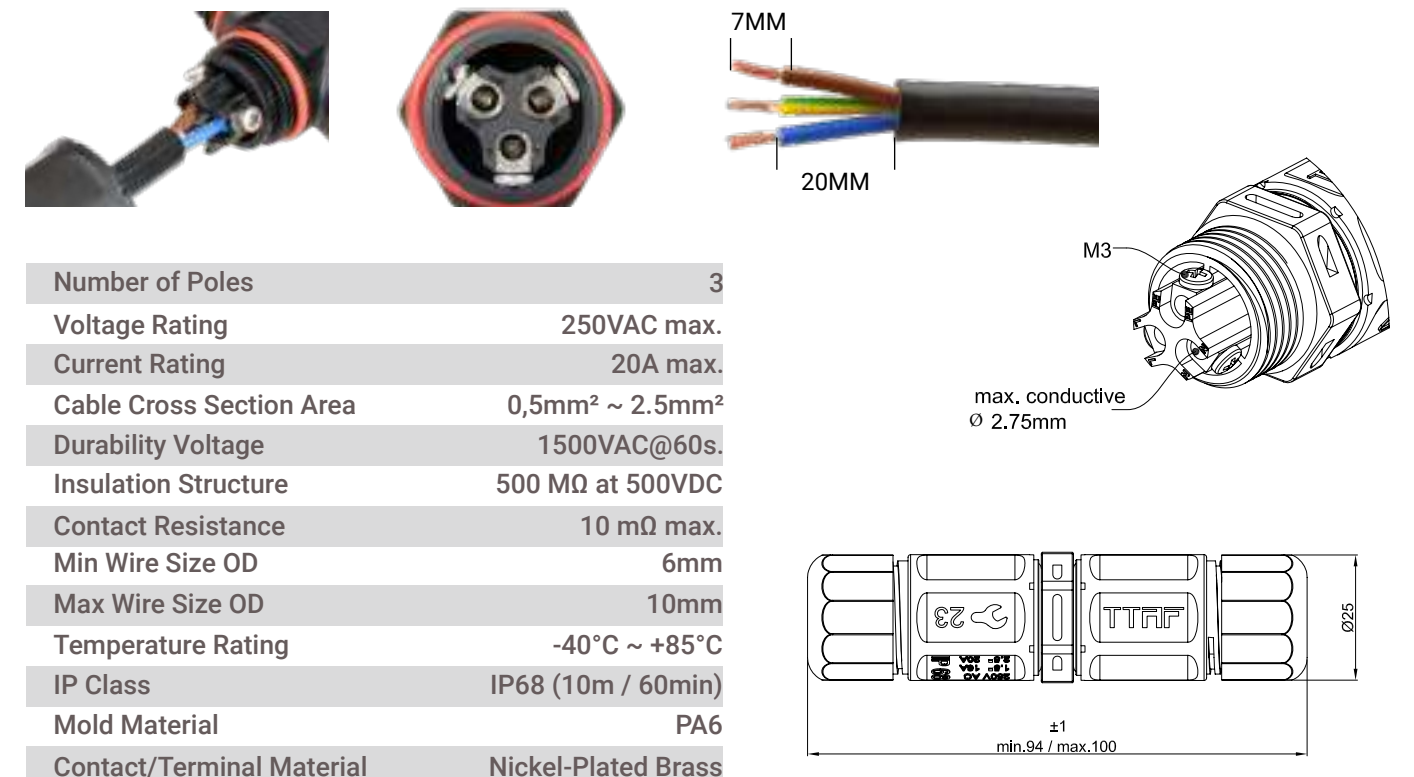


WPI Series

3 Pin I Field Assembly Screw Connection Connector

Product Code - WPI-0302M20/14
Waterproof Connector Series

EN 60309-1
EN 60695-2
EN 61984-2009



Number of Poles	3
Voltage Rating	250VAC max.
Current Rating	20A max.
Cable Cross Section Area	0,5mm ² ~ 2.5mm ²
Durability Voltage	1500VAC@60s.
Insulation Structure	500 MΩ at 500VDC
Contact Resistance	10 mΩ max.
Min Wire Size OD	6mm
Max Wire Size OD	10mm
Temperature Rating	-40°C ~ +85°C
IP Class	IP68 (10m / 60min)
Mold Material	PA6
Contact/Terminal Material	Nickel-Plated Brass
Seal Material	Silicon



WPM-WPF-WPP Series

2 Pin Pluggable Screw Connection Connector

Product Code - WPM-0200M25 / WPF-0200M25 / WPP-0200M25

Waterproof Connector Series



WPM-WPF-WPP Series

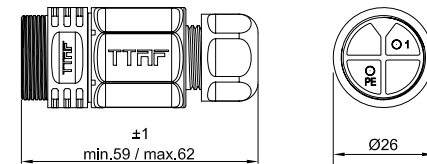
3 Pin Pluggable Screw Connection Connector

Product Code - WPM-0300M25 / WPF-0300M25 / WPP-0300M25

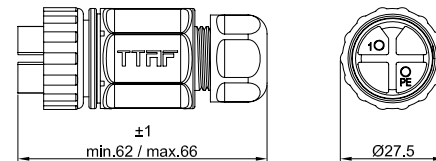
Waterproof Connector Series



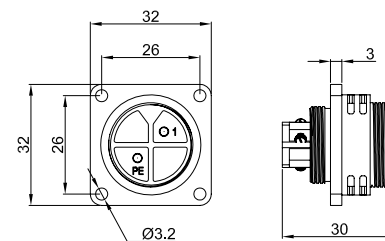
WPM-0200M25



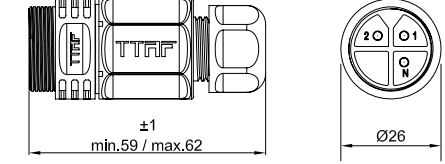
WPF-0200M25



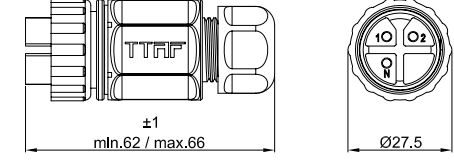
WPP-0200M25



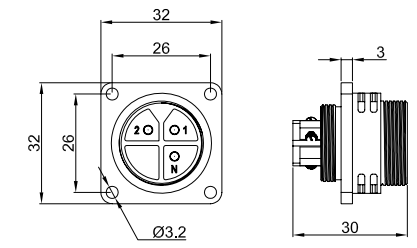
WPM-0300M25



WPF-0300M25



WPP-0300M25



Number of Poles	2
Voltage Rating	250VAC max.
Current Rating	25A max.
Cable Cross Section Area	0,5mm ² ~ 2.5mm ²
Durability Voltage	3000VAC@60s.
Insulation Structure	500 MΩ at 500VDC
Contact Resistance	30 mΩ max.
Min Wire Size OD	6mm
Max Wire Size OD	10mm
Temperature Rating	-40°C ~ +85°C
IP Class	IP68 (10m / 60min)
Mold Material	PA6
Contact/Terminal Material	Nickel-Plated Brass
Seal Material	Silicon

Number of Poles	3
Voltage Rating	250VAC max.
Current Rating	25A max.
Cable Cross Section Area	0,5mm ² ~ 2.5mm ²
Durability Voltage	3000VAC@60s.
Insulation Structure	500 MΩ at 500VDC
Contact Resistance	30 mΩ max.
Min Wire Size OD	6mm
Max Wire Size OD	10mm
Temperature Rating	-40°C ~ +85°C
IP Class	IP68 (10m / 60min)
Mold Material	PA6
Contact/Terminal Material	Nickel-Plated Brass
Seal Material	Silicon



WPM-WPF-WPP Series

4 Pin Pluggable Screw Connection Connector

Product Code - WPM-0400M25 / WPF-0400M25 / WPP-0400M25

Waterproof Connector Series



WPI Series

3 Pin I Field Assembly Screw Connection Connector

Product Code - WPI-0302M20

Waterproof Connector Series

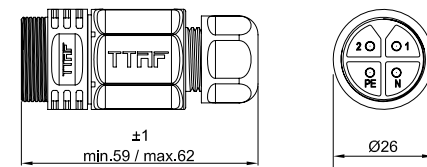
EN 60309-1

EN 60695-2

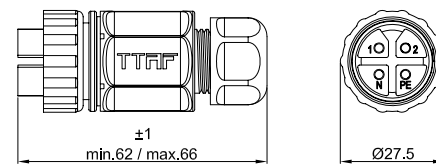
EN 61984-2009



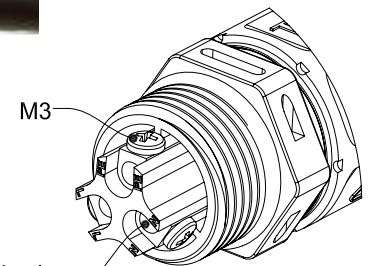
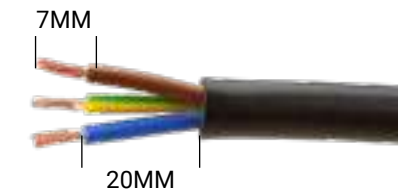
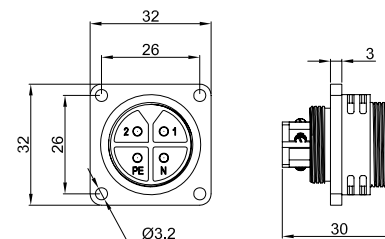
WPM-0400M25



WPF-0400M25

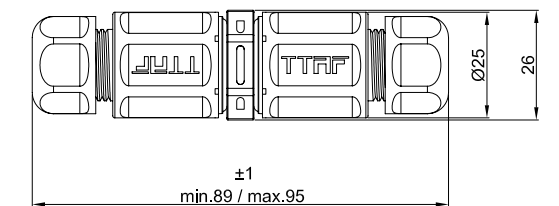


WPP-0400M25



Number of Poles	4
Voltage Rating	250VAC max.
Current Rating	25A max.
Cable Cross Section Area	0,5mm ² ~ 2.5mm ²
Durability Voltage	3000VAC@60s.
Insulation Structure	500 MΩ at 500VDC
Contact Resistance	30 mΩ max.
Min Wire Size OD	6mm
Max Wire Size OD	10mm
Temperature Rating	-40°C ~ +85°C
IP Class	IP68 (10m / 60min)
Mold Material	PA6
Contact/Terminal Material	Nickel-Plated Brass
Seal Material	Silicon

Number of Poles	3
Voltage Rating	250VAC max.
Current Rating	20A max.
Cable Cross Section Area	0,5mm ² ~ 2.5mm ²
Durability Voltage	1500VAC@60s.
Insulation Structure	500 MΩ at 500VDC
Contact Resistance	10 mΩ max.
Min Wire Size OD	6mm
Max Wire Size OD	10mm
Temperature Rating	-40°C ~ +85°C
IP Class	IP68 (10m / 60min)
Mold Material	PA6
Contact/Terminal Material	Nickel-Plated Brass
Seal Material	Silicon





WPI Series

3 Pin I Field Assembly Screw Connection Connector

Product Code - WPI-0302M20/

Waterproof Connector Series



Number of Poles	3
Voltage Rating	250VAC max.
Current Rating	20A max.
Cable Cross Section Area	0,5mm ² ~ 2.5mm ²
Durability Voltage	1500VAC@60s.
Insulation Structure	500 MΩ at 500VDC
Contact Resistance	10 mΩ max.
Min Wire Size OD	6.5mm ~ 10mm
Max Wire Size OD	10.5mm ~ 14mm
Temperature Rating	-40°C ~ +85°C
IP Class	IP68 (10m / 60min)
Mold Material	PA6
Contact/Terminal Material	Nickel-Plated Brass
Seal Material	Silicon



WPP Series

3 Pin Panel Field Assembly Screw Connection Connector

Product Code - WPP-0302M20

Waterproof Connector Series



Number of Poles	3
Voltage Rating	250VAC max.
Current Rating	20A max.
Cable Cross Section Area	0,5mm ² ~ 2.5mm ²
Durability Voltage	1500VAC@60s.
Insulation Structure	500 MΩ at 500VDC
Contact Resistance	10 mΩ max.
Min Wire Size OD	6mm
Max Wire Size OD	10mm
Temperature Rating	-40°C ~ +85°C
IP Class	IP68 (10m / 60min)
Mold Material	PA6
Contact/Terminal Material	Nickel-Plated Brass
Seal Material	Silicon



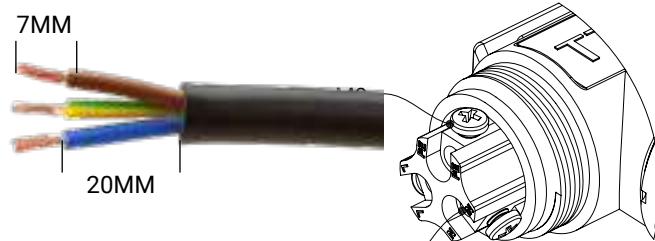
WPT Series

3 Pin T Field Assembly Screw Connection Connector

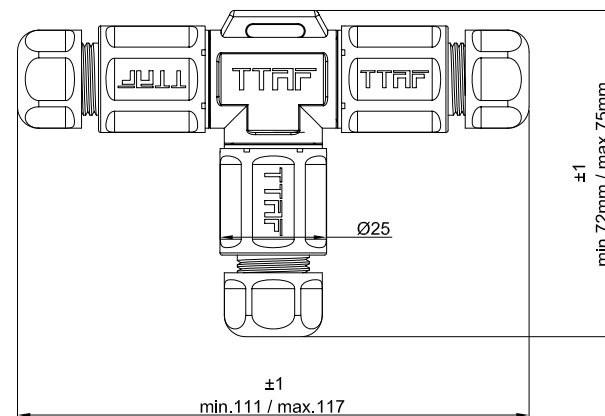
Product Code - WPT-0303M20

Waterproof Connector Series

EN 60309-1
EN 60695-2
EN 61984-2009



Number of Poles	3
Voltage Rating	250VAC max.
Current Rating	20A max.
Cable Cross Section Area	0,5mm ² ~ 2.5mm ²
Durability Voltage	1500VAC@60s.
Insulation Structure	500 MΩ at 500VDC
Contact Resistance	10 mΩ max.
Min Wire Size OD	6mm
Max Wire Size OD	10mm
Temperature Rating	-40°C ~ +85°C
IP Class	IP68 (10m / 60min)
Mold Material	PA6
Contact/Terminal Material	Nickel-Plated Brass
Seal Material	Silicon

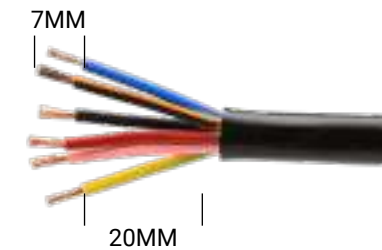


WPI Series

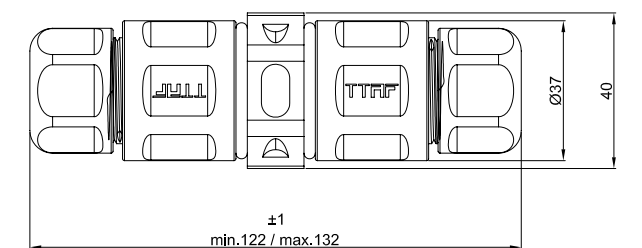
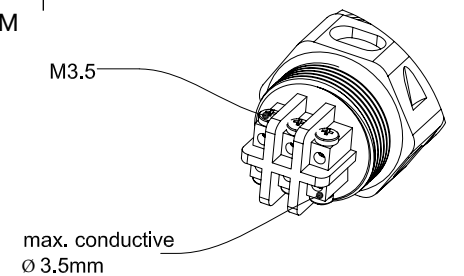
6 Power Pin I Field Assembly Screw Connection Connector

Product Code - WPI-0602M25

Waterproof Connector Series



Number of Poles	6
Voltage Rating	250VAC max.
Current Rating	25A max.
Cable Cross Section Area	0,75mm ² ~ 4mm ²
Durability Voltage	1500VAC@60s.
Insulation Structure	1000 MΩ at 1000 VDC
Contact Resistance	10 mΩ max.
Min Wire Size OD	10mm
Max Wire Size OD	14mm
Temperature Rating	-40°C ~ +85°C
IP Class	IP68 (10m / 60min)
Mold Material	PA6
Contact/Terminal Material	Nickel-Plated Brass
Seal Material	Silicon



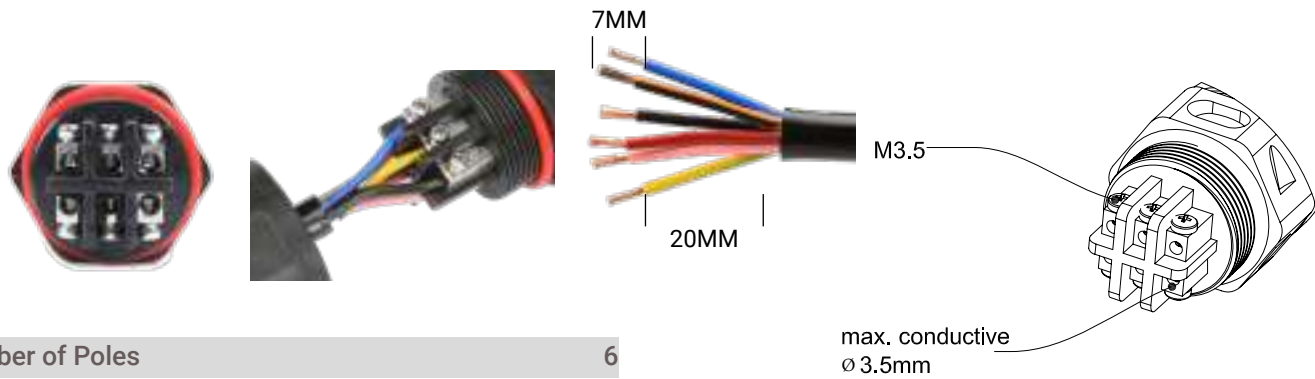


WPT Series

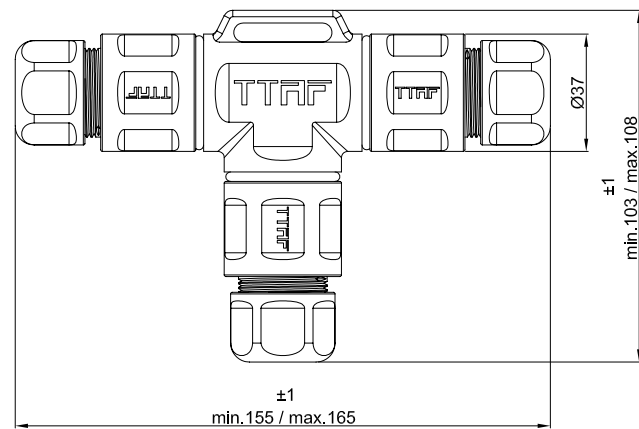
6 Power Pin T Field Assembly Screw Connection Connector

Product Code - WPT-0603M25

Waterproof Connector Series



Number of Poles	6
Voltage Rating	250VAC max.
Current Rating	25A max.
Cable Cross Section Area	0,75mm ² ~ 4mm ²
Durability Voltage	1500VAC@60s.
Insulation Structure	1000 MΩ at 1000 VDC
Contact Resistance	10 mΩ max.
Min Wire Size OD	10mm
Max Wire Size OD	14mm
Temperature Rating	-40°C ~ +85°C
IP Class	IP68 (10m / 60min)
Mold Material	PA6
Contact/Terminal Material	Nickel-Plated Brass
Seal Material	Silicon



WPS-WPA Series

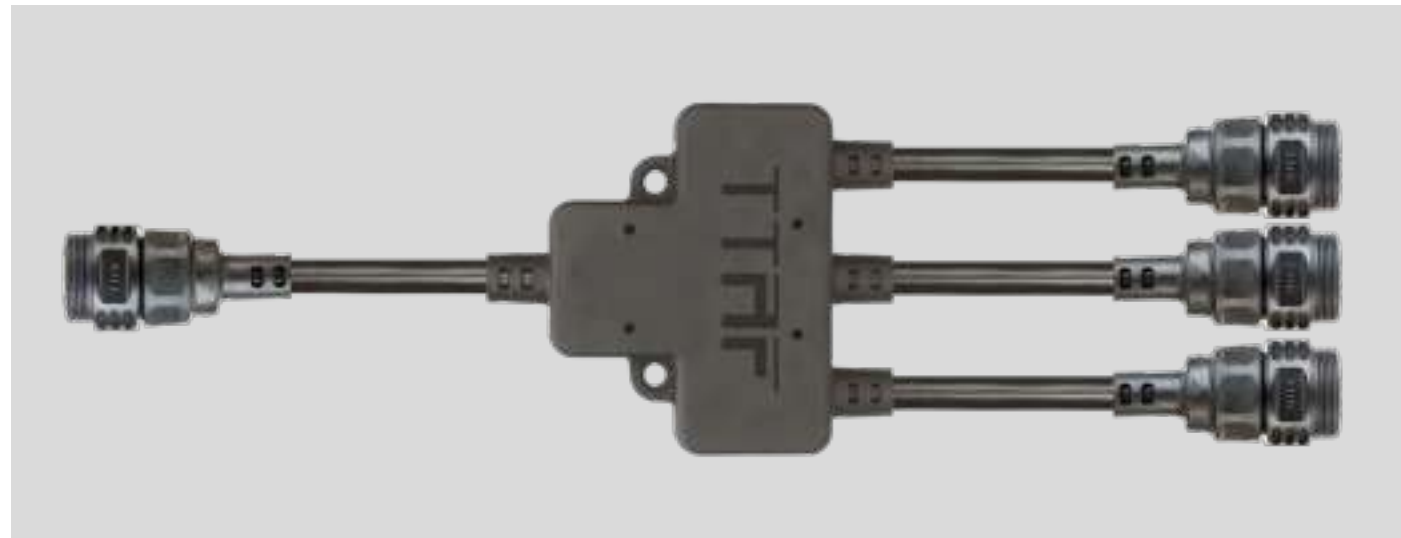




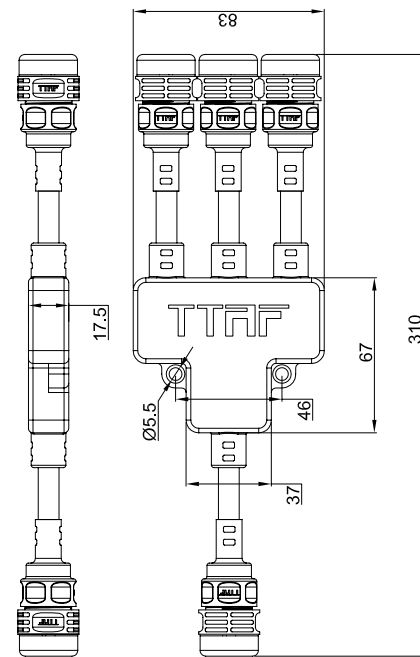
WPS Series

2 Pin Male Pluggable Electrical Splitter
1 In x 3 Out

Product Code - WPS-0204N20M
Waterproof Splitter Series



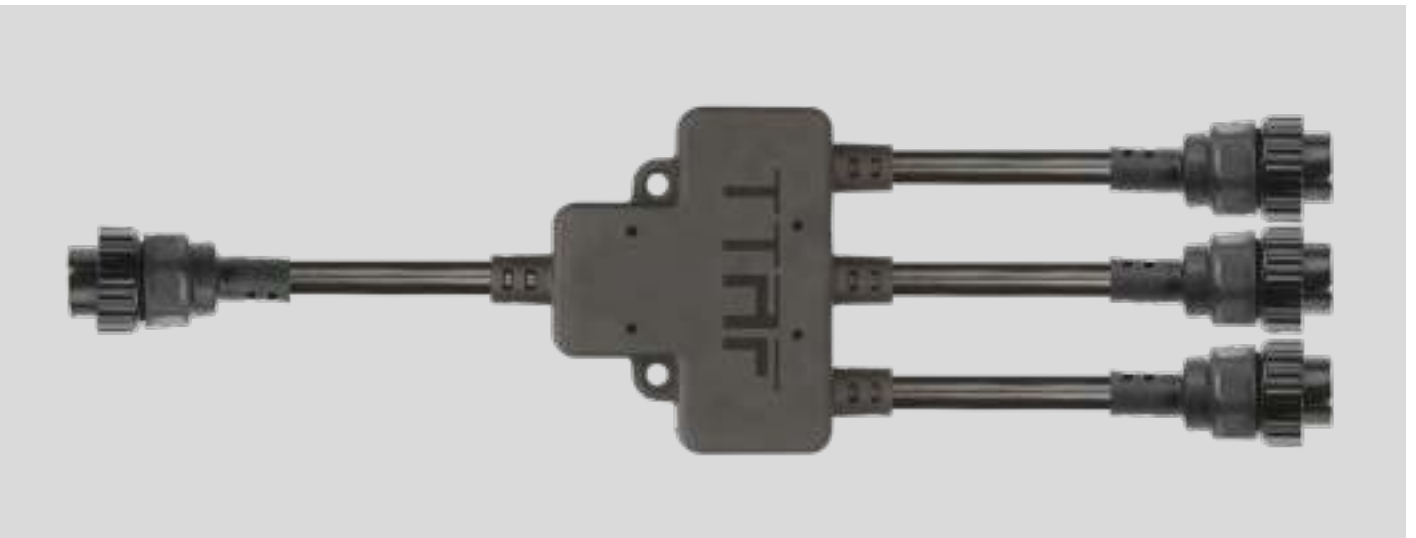
Number of Poles	2
Voltage Rating	250VAC max.
Current Rating	20A max.
Durability Voltage	3000VAC@60s.
Insulation Structure	500 MΩ at 500 VDC
Contact Resistance	30 mΩ max.
Temperature Rating	-40°C ~ +85°C
IP Class	IP68 (10m / 60min)
Mold Material	PA6
Contact/Terminal Material	Nickel-Plated Brass
Seal Material	Silicon



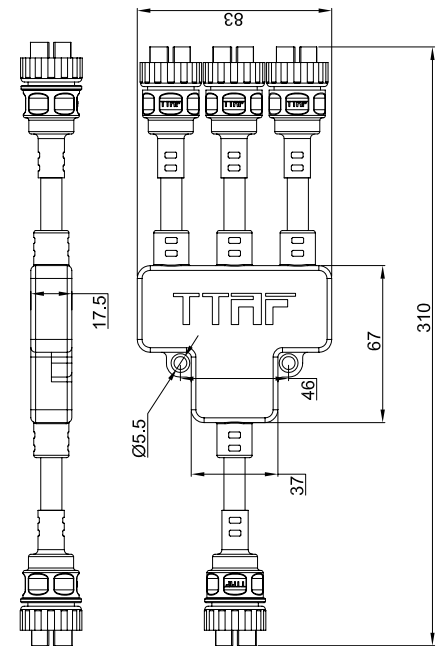
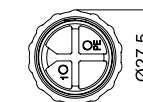
WPS Series

2 Pin Female Pluggable Electrical Splitter
1 In x 3 Out

Product Code - WPS-0204N20F
Waterproof Splitter Series



Number of Poles	2
Voltage Rating	250VAC max.
Current Rating	20A max.
Durability Voltage	3000VAC@60s.
Insulation Structure	500 MΩ at 500 VDC
Contact Resistance	30 mΩ max.
Temperature Rating	-40°C ~ +85°C
IP Class	IP68 (10m / 60min)
Mold Material	PA6
Contact/Terminal Material	Nickel-Plated Brass
Seal Material	Silicon

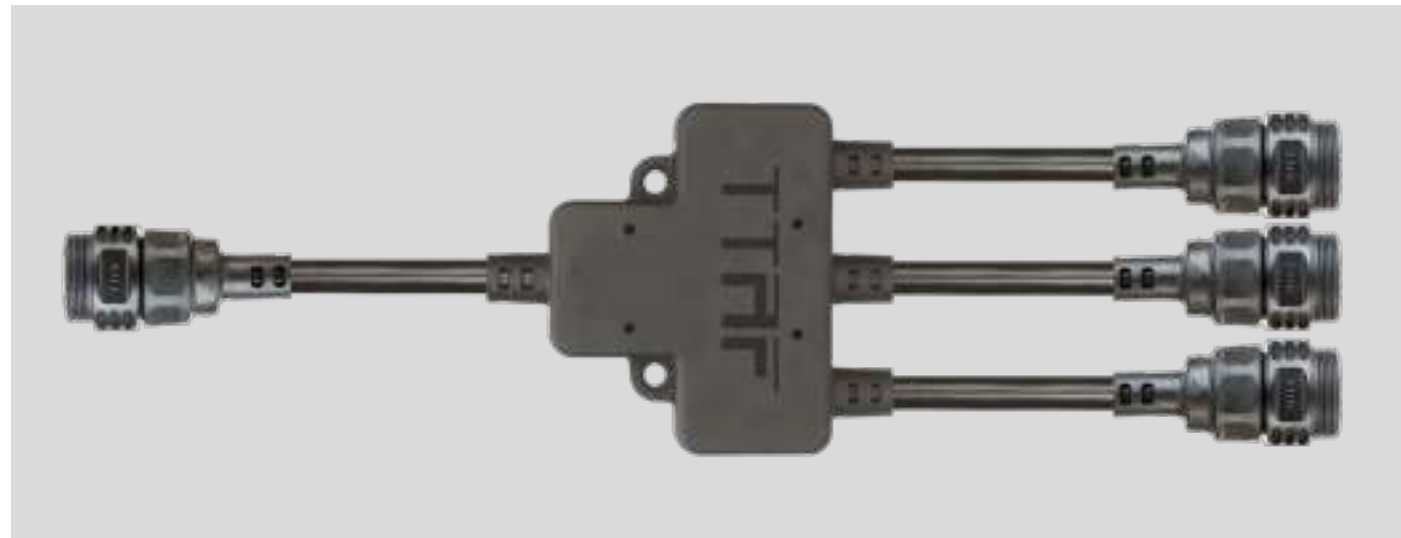




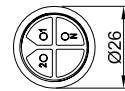
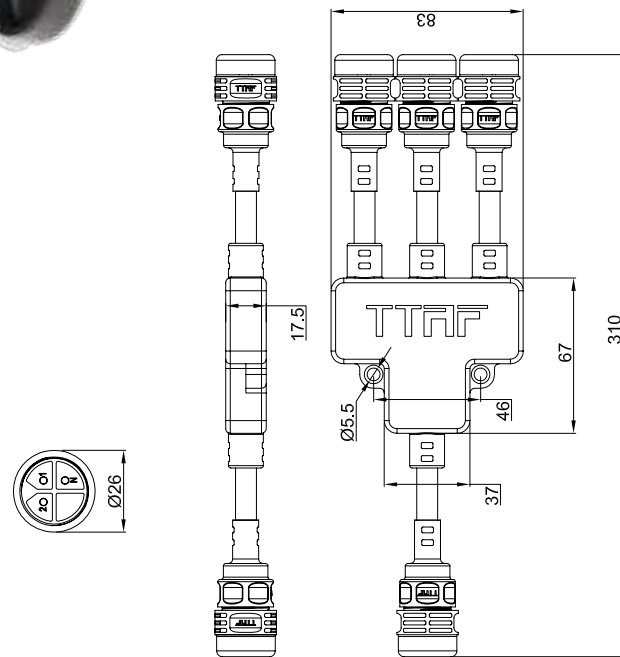
WPS Series

3 Pin Male Pluggable Electrical Splitter
1 In x 3 Out

Product Code - WPS-0304N20M
Waterproof Splitter Series



Number of Poles	3
Voltage Rating	250VAC max.
Current Rating	20A max.
Durability Voltage	3000VAC@60s.
Insulation Structure	500 MΩ at 500 VDC
Contact Resistance	30 mΩ max.
Temperature Rating	-40°C ~ +85°C
IP Class	IP68 (10m / 60min)
Mold Material	PA6
Contact/Terminal Material	Nickel-Plated Brass
Seal Material	Silicon



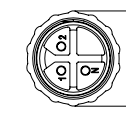
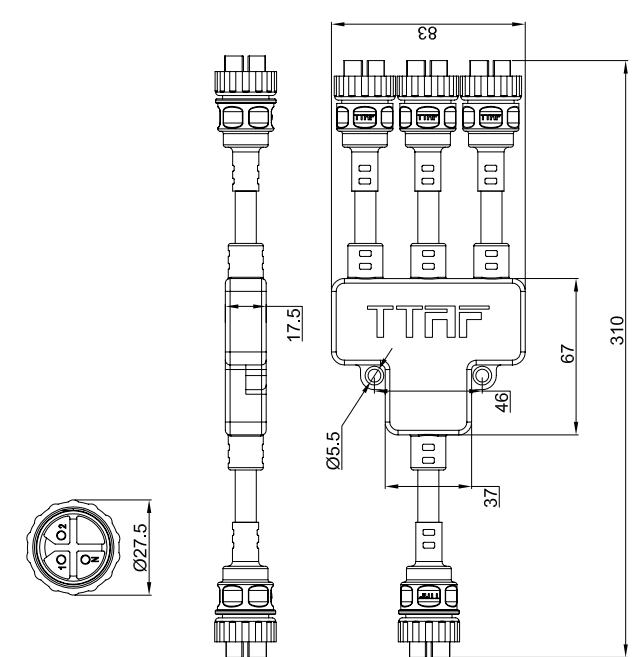
WPS Series

3 Pin Female Pluggable Electrical Splitter
1 In x 3 Out

Product Code- WPS-0304N20F
Waterproof Splitter Series



Number of Poles	3
Voltage Rating	250VAC max.
Current Rating	20A max.
Durability Voltage	3000VAC@60s.
Insulation Structure	500 MΩ at 500 VDC
Contact Resistance	30 mΩ max.
Temperature Rating	-40°C ~ +85°C
IP Class	IP68 (10m / 60min)
Mold Material	PA6
Contact/Terminal Material	Nickel-Plated Brass
Seal Material	Silicon



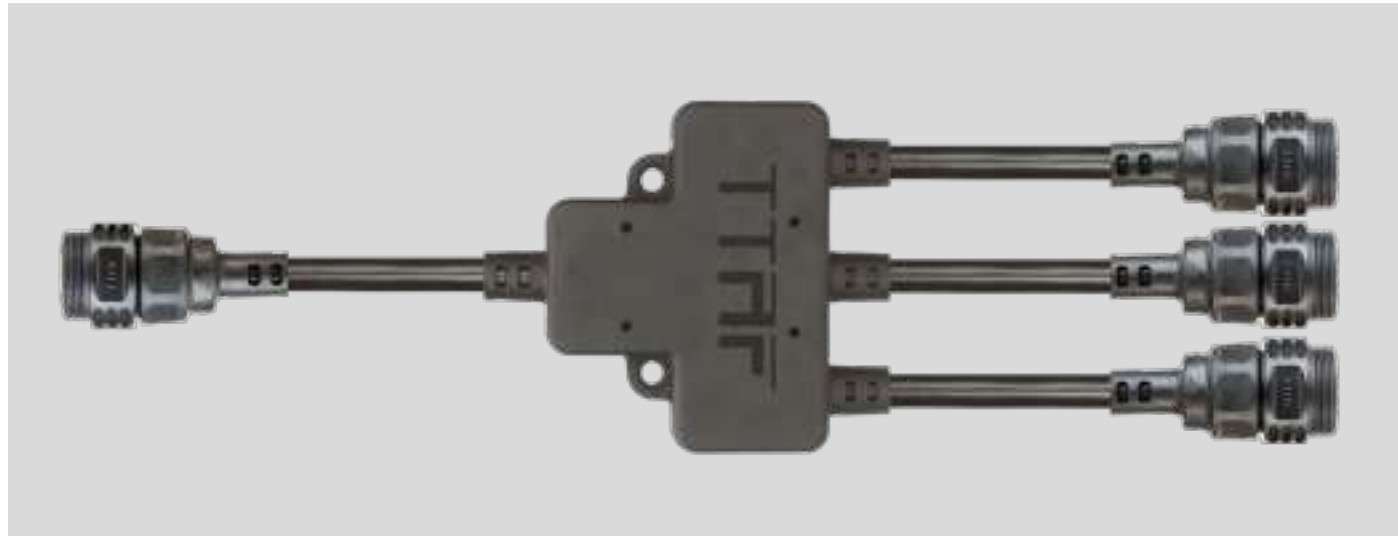


WPS Series

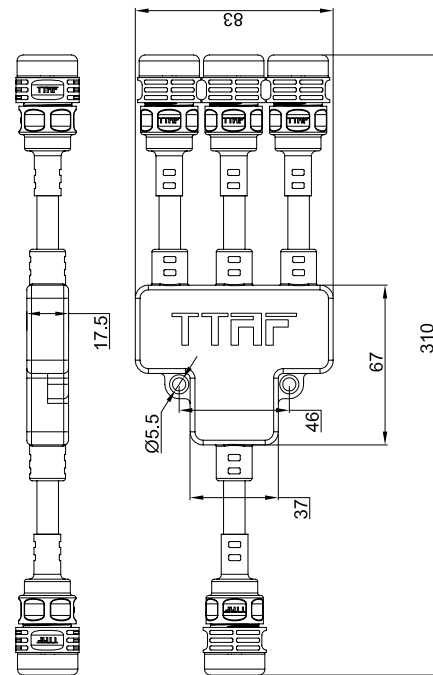
4 Pin Male Pluggable Electrical Splitter
1 In x 3 Out

Product Code - WPS-0404N20M

Waterproof Splitter Series



Number of Poles	4
Voltage Rating	250VAC max.
Current Rating	20A max.
Durability Voltage	3000VAC@60s.
Insulation Structure	500 MΩ at 500 VDC
Contact Resistance	30 mΩ max.
Temperature Rating	-40°C ~ +85°C
IP Class	IP68 (10m / 60min)
Mold Material	PA6
Contact/Terminal Material	Nickel-Plated Brass
Seal Material	Silicon



WPS Series

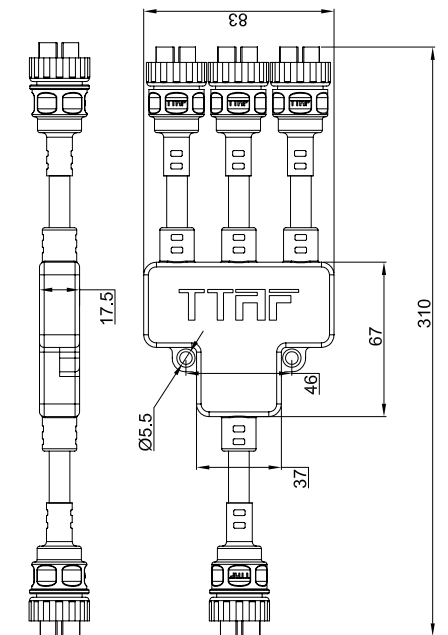
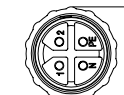
4 Pin Female Pluggable Electrical Splitter
1 In x 3 Out

Product Code - WPS-0404N20F

Waterproof Splitter Series



Number of Poles	4
Voltage Rating	250VAC max.
Current Rating	20A max.
Durability Voltage	3000VAC@60s.
Insulation Structure	500 MΩ at 500 VDC
Contact Resistance	30 mΩ max.
Temperature Rating	-40°C ~ +85°C
IP Class	IP68 (10m / 60min)
Mold Material	PA6
Contact/Terminal Material	Nickel-Plated Brass
Seal Material	Silicon

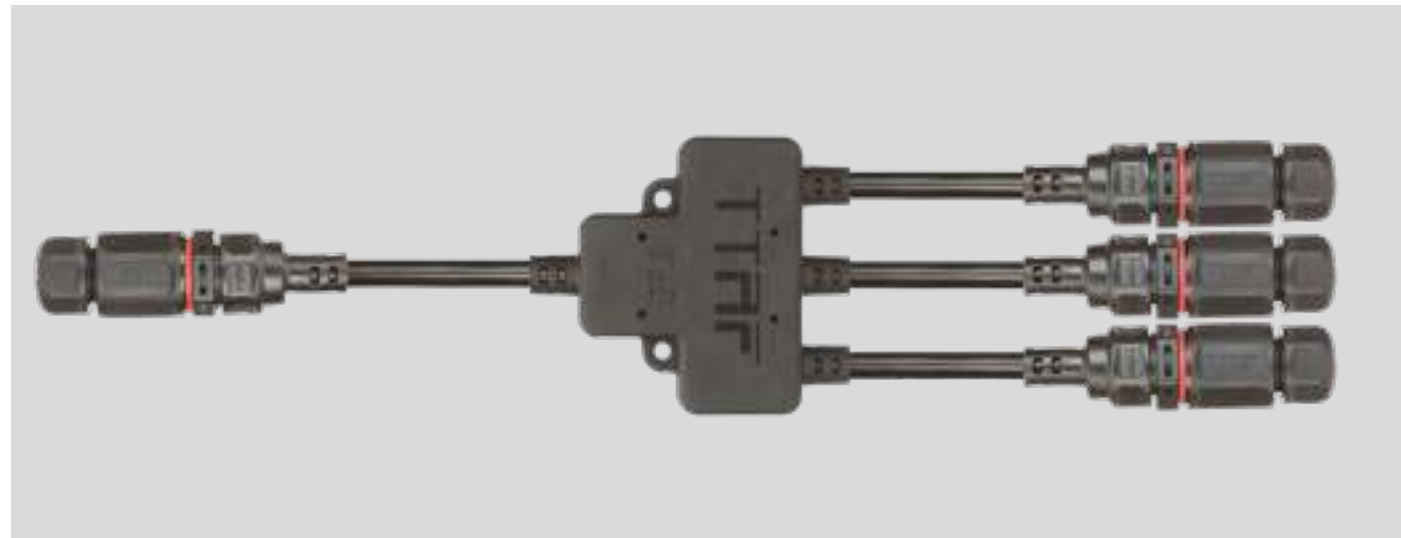




WPA Series

3 Pin Screw Connection Electrical Splitter
1 In x 3 Out

Product Code - WPA-0304N20
Waterproof Splitter Series



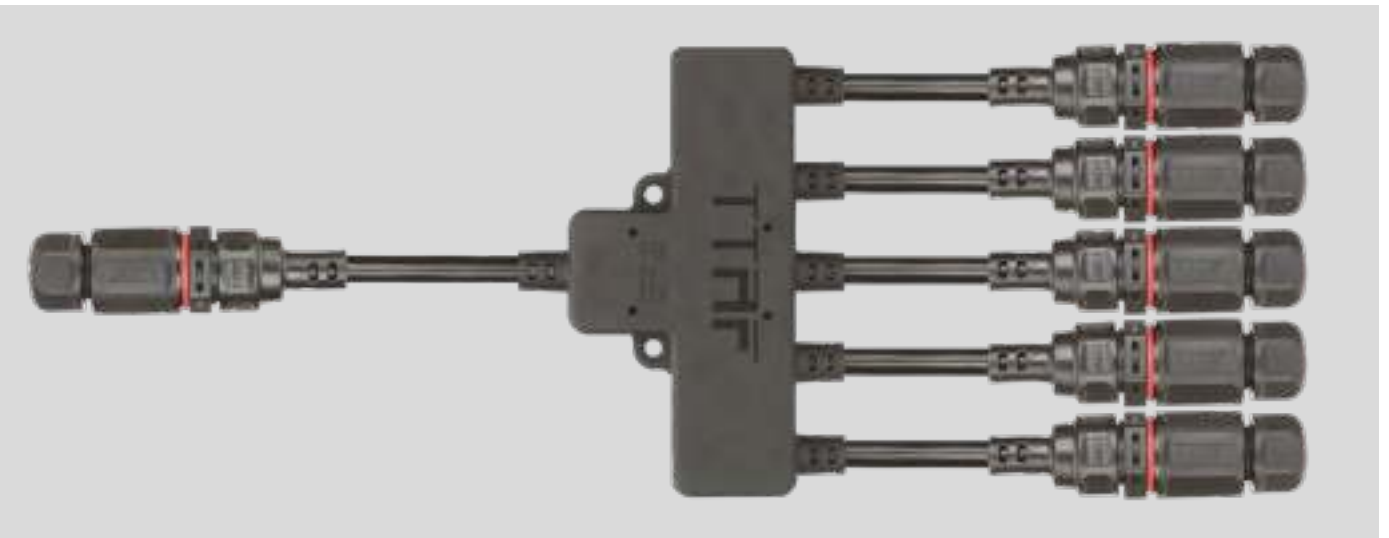
Number of Poles	3
Voltage Rating	250VAC max.
Current Rating	20A max.
Cable Cross Section Area	0,5mm ² ~2,5mm ²
Durability Voltage	1000VAC@60s.
Insulation Structure	500 MΩ at 500 VDC
Contact Resistance	10 mΩ max.
Min Wire Size OD	6mm
Max Wire Size OD	10mm
Temperature Rating	-40°C ~ +85°C
IP Class	IP68 (10m / 60min)
Mold Material	PA6
Contact/Terminal Material	Nickel-Plated Brass



WPA Series

3 Pin Screw Connection Electrical Splitter
1 In x 5 Out

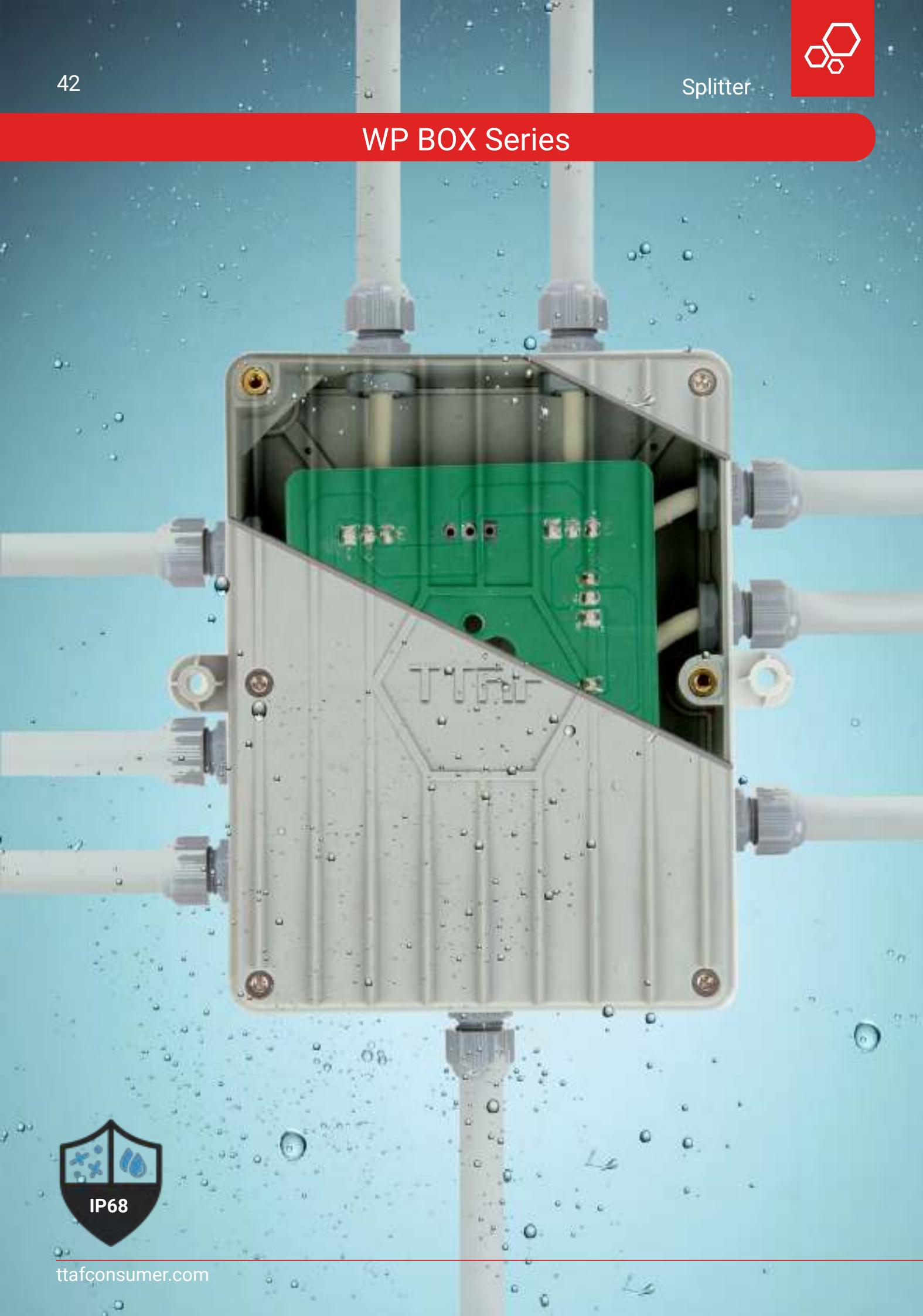
Product Code - WPA-0306N20
Waterproof Splitter Series



Number of Poles	3
Voltage Rating	250VAC max.
Current Rating	20A max.
Cable Cross Section Area	0,5mm ² ~2,5mm ²
Durability Voltage	1000VAC@60s.
Insulation Structure	500 MΩ at 500 VDC
Contact Resistance	10 mΩ max.
Min Wire Size OD	6mm
Max Wire Size OD	10mm
Temperature Rating	-40°C ~ +85°C
IP Class	IP68 (10m / 60min)
Mold Material	PA6
Contact/Terminal Material	Nickel-Plated Brass



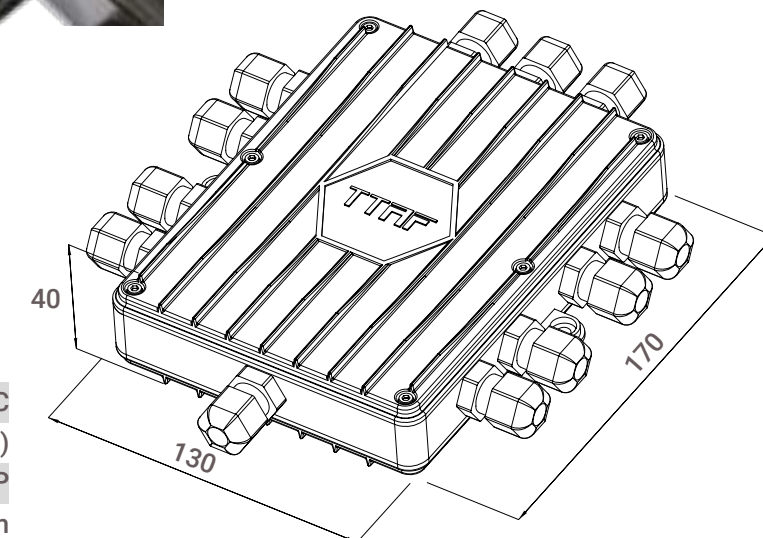
WP BOX Series



WP BOX Series

IP Box Waterproof Electrical Splitter

Product Code - WP-BOX-04



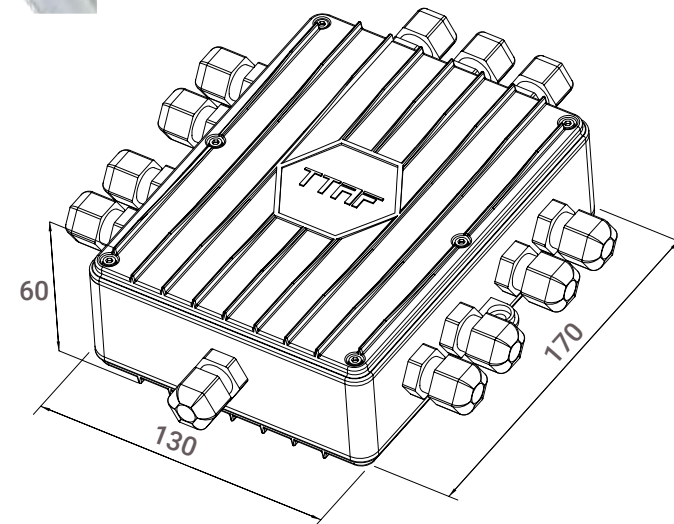
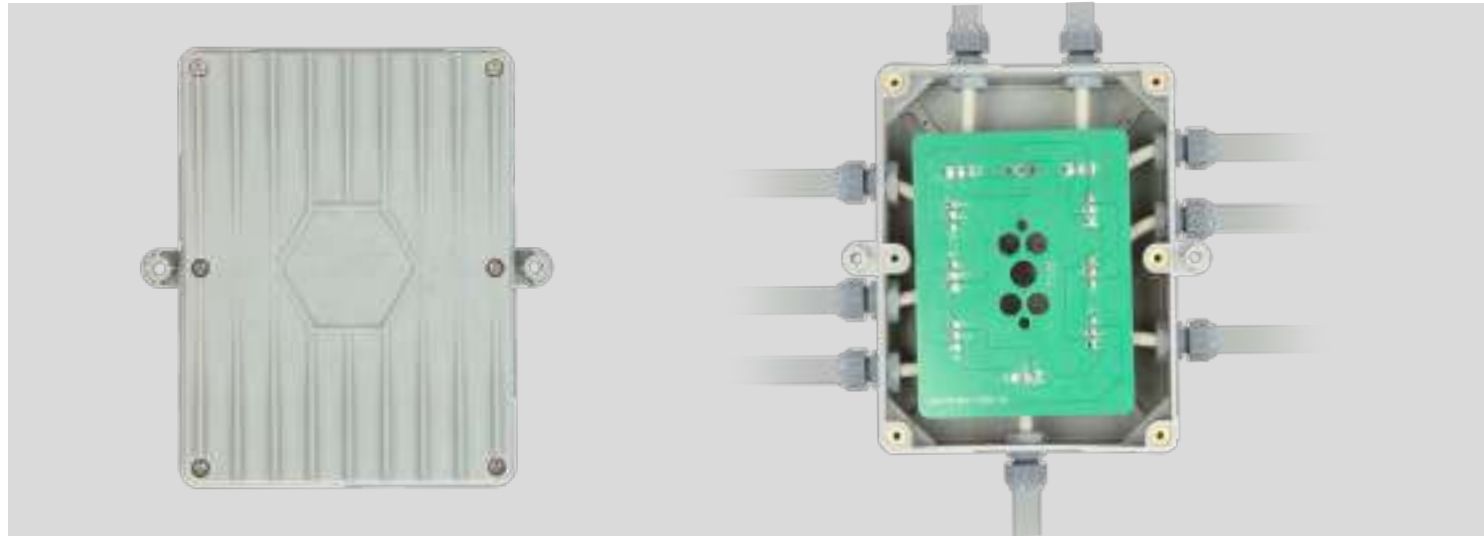
Temperature Rating	-40°C ~ +85°C
IP Class	IP68 (2m / 60min)
Mold Material	ABS-PP
Dimensions	170x130x40mm
Cable Gland Max Diameter	14mm



WP BOX Series

IP Box Waterproof Electrical Splitter

Product Code - WP-BOX-05



Temperature Rating	-40°C ~ +85°C
IP Class	IP68 (2m / 60min)
Mold Material	ABS-PP
Dimensions	170x130x60mm
Cable Gland Max Diameter	18mm



KLM Series

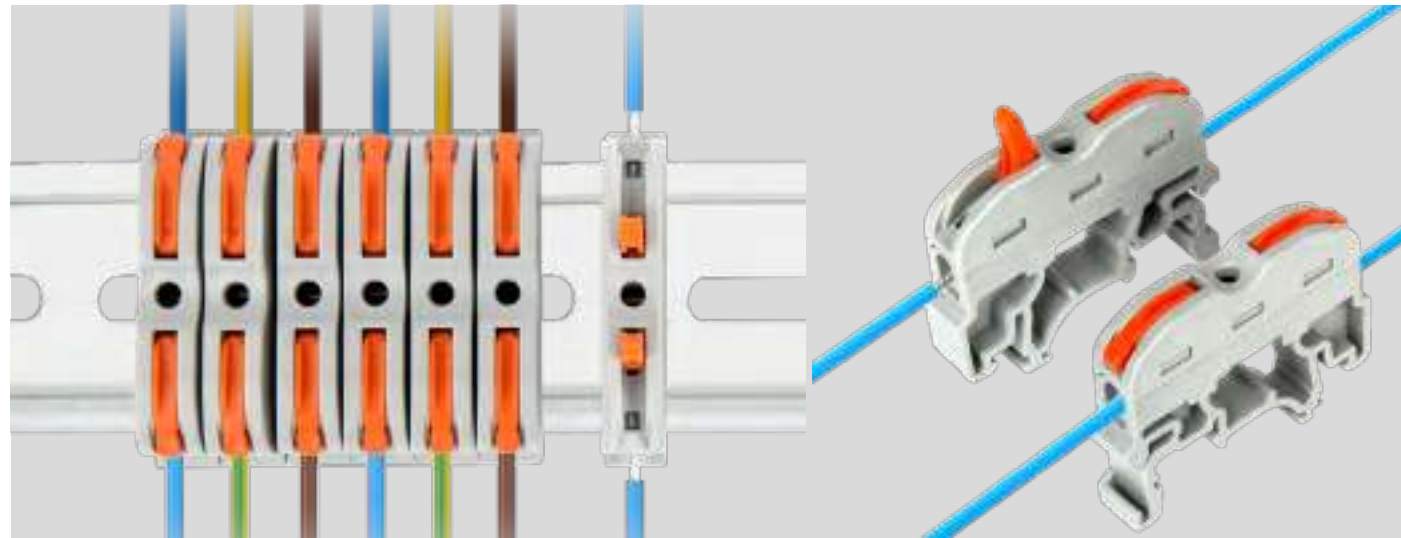




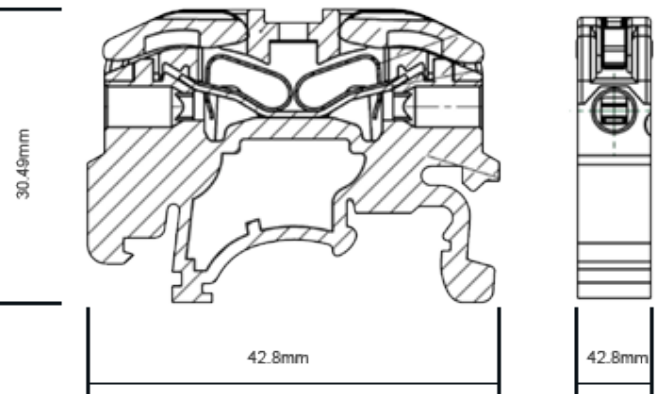
KLM Series

1 Pin Rail Type Without Screw Terminal Block

Product Code - KLM-29-G



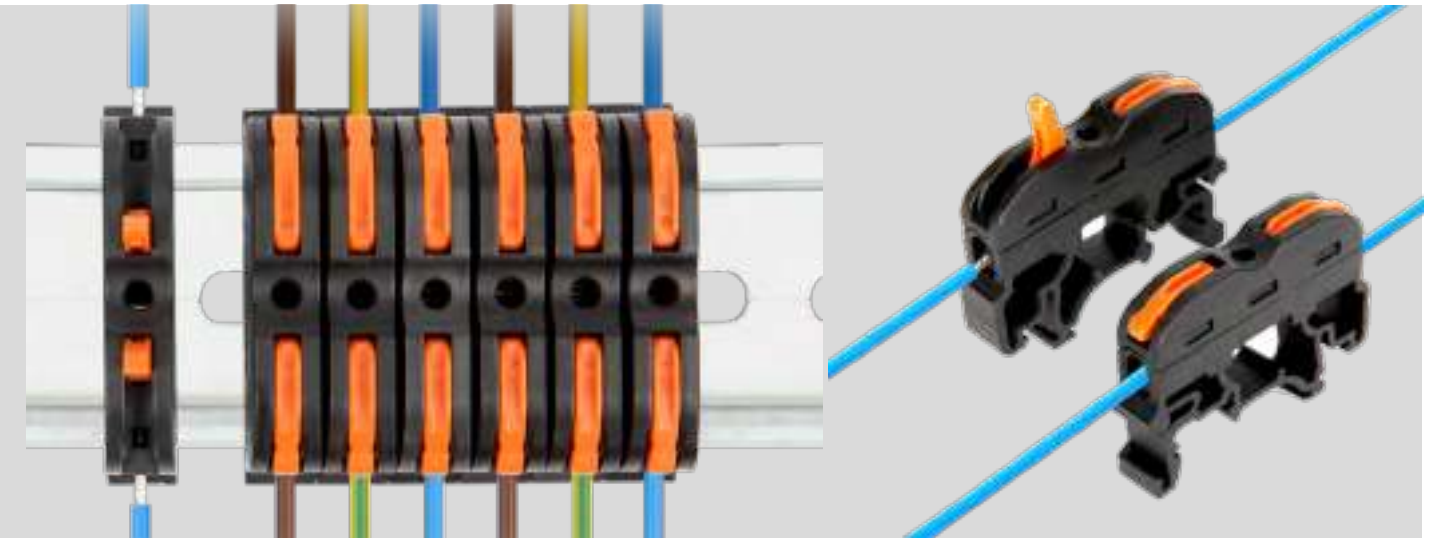
Number of Poles	1
Voltage Rating	250V /600V.
Current Rating	32A max.
Cable Diameter	28-12 AWG
Temperature Resistance	25
L/W/H	42.8X8X30.49
Contact Resistance	0.015 mΩ
Insulation Resistance	1000 MΩ
Contact/Terminal Material	Nickel-Plated Brass
Mold Material	Nylon UL 94V 2 (0) PA66



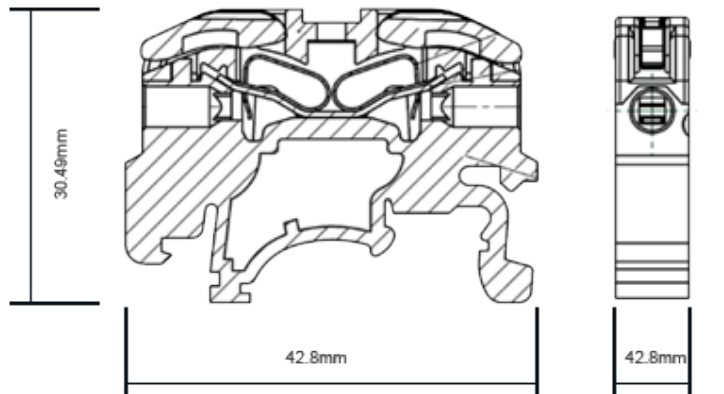
KLM Series

1 Pin Rail Type Without Screw Terminal Block

Product Code - KLM-29-SY



Number of Poles	1
Voltage Rating	250V /600V.
Current Rating	32A max.
Cable Diameter	28-12 AWG
Temperature Resistance	25
L/W/H	42.8X8X30.49
Contact Resistance	0.015 mΩ
Insulation Resistance	1000 MΩ
Contact/Terminal Material	Nickel-Plated Brass
Mold Material	Nylon UL 94V 2 (0) PA66

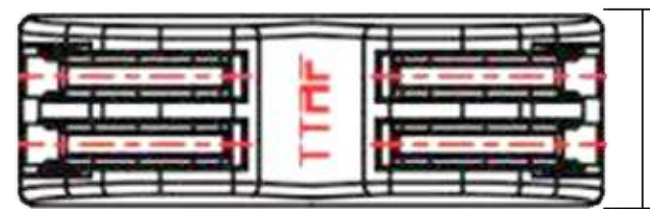
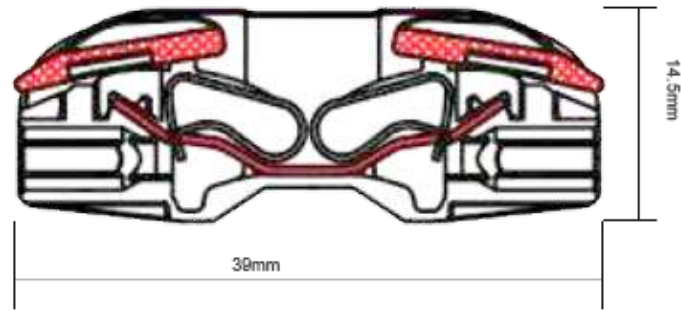




KLM Series

2 Pin Without Screw Terminal Block

Product Code - KLM-30



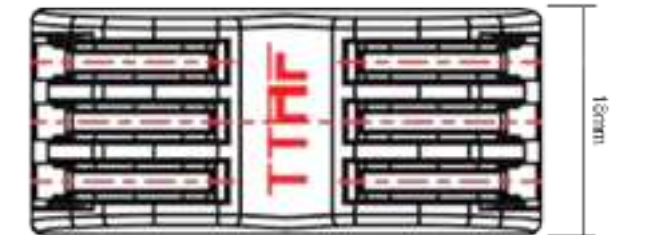
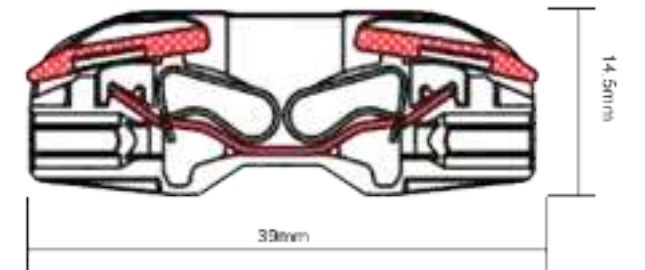
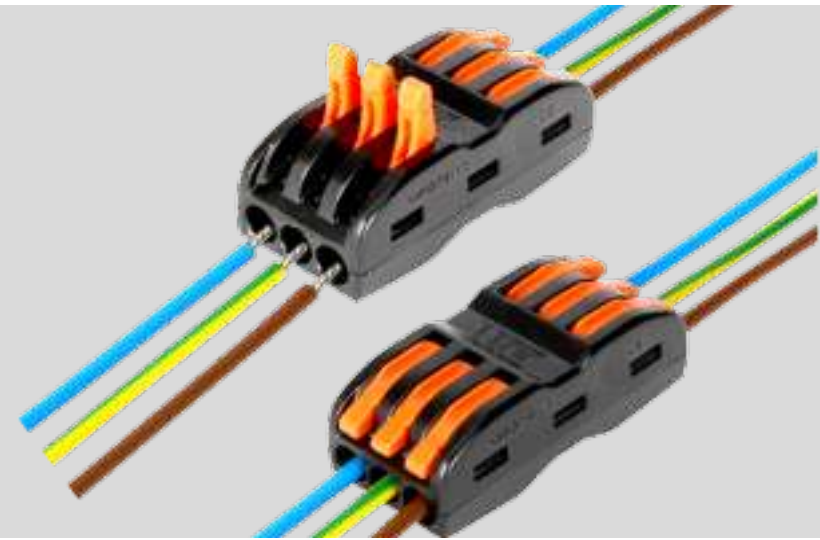
Number of Poles	2
Reference Standart	IEC
Voltage Resistance	2.5kv
Voltage Rating	450V / 600V.
Current Rating	32A max.
Wire Diameter	0,14(0.2)~4awg/mm ²
L/W/H	39X12.5X14.5
Temperature Rate	-40°C ~ +105°C
Contact / Terminal Material	Electrolytic Copper Nickeltin
Mold Material	PA66



KLM Series

3 Pin Without Screw Terminal Block

Product Code - KLM-31



Number of Poles	3
Reference Standart	IEC
Voltage Resistance	2.5kv
Voltage Rating	450V / 600V.
Current Rating	32A max.
Wire Diameter	0,14(0.2)~4awg/mm ²
L/W/H	39X18X14.5
Temperature Rate	-40°C ~ +105°C
Contact / Terminal Material	Electrolytic Copper Nickeltin
Mold Material	PA66

